
Local Elections play a Major Role
in the
Economic Future of the
2nd Congressional District

-Kansas Policy Institute

About Kansas Policy Institute

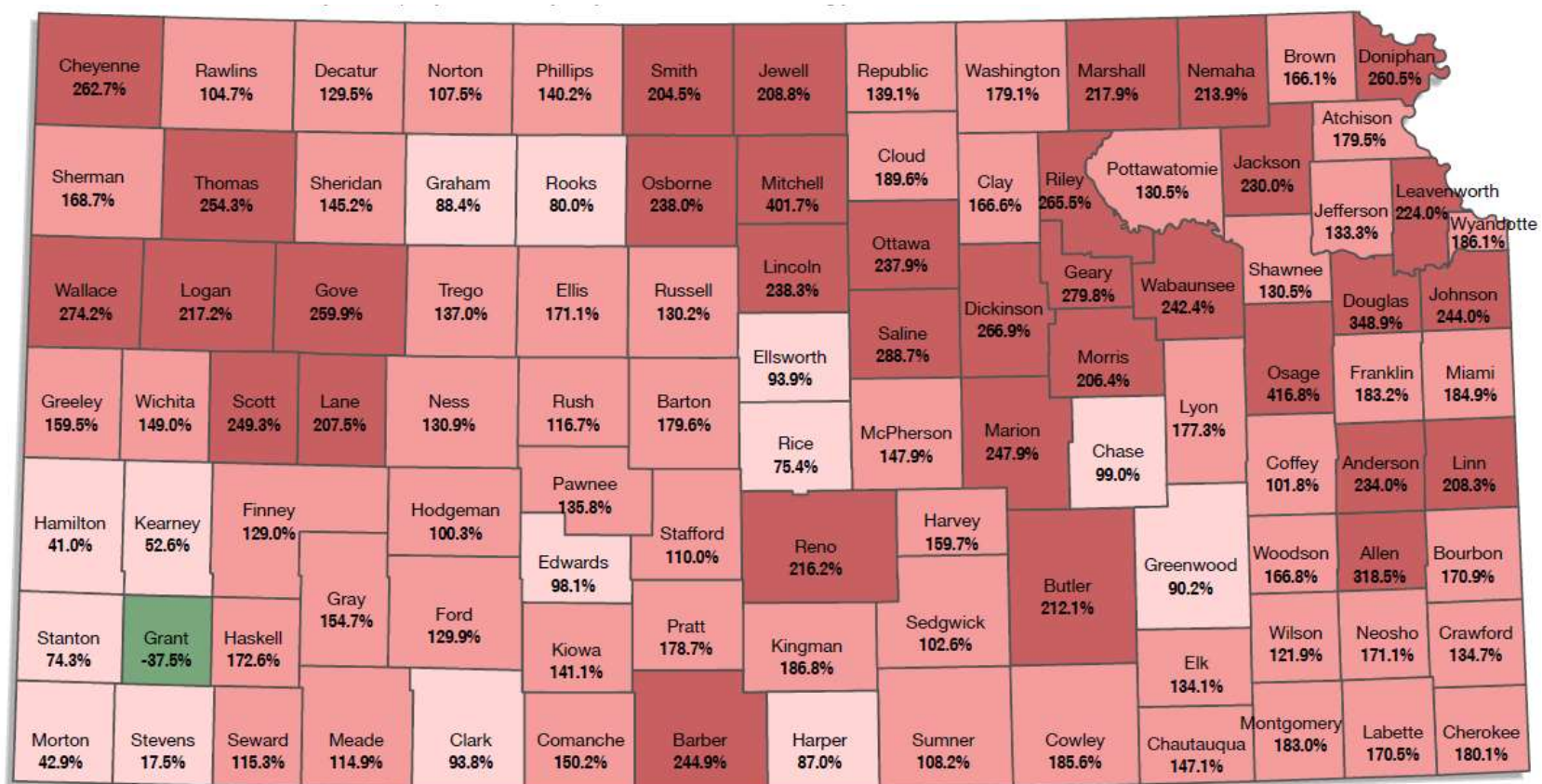
- Non-profit research and education organization with offices in Wichita and Overland Park.
- Protect constitutional rights, promote policies to hold taxes down, and create better educational opportunities.
- 2 subsidiaries:
 - Sentinel online news service
 - Kansas Justice Institute; public-interest litigation center



Local elections and the future

- Are your property taxes reasonable?
- Are school districts properly preparing kids for college and career?
- Do rural co-op electric rates encourage economic development?
- Do you want local officials to mandate how to build fences and how you can use your land?
- *If any answer is 'no,' how will anything change if you aren't engaged?*

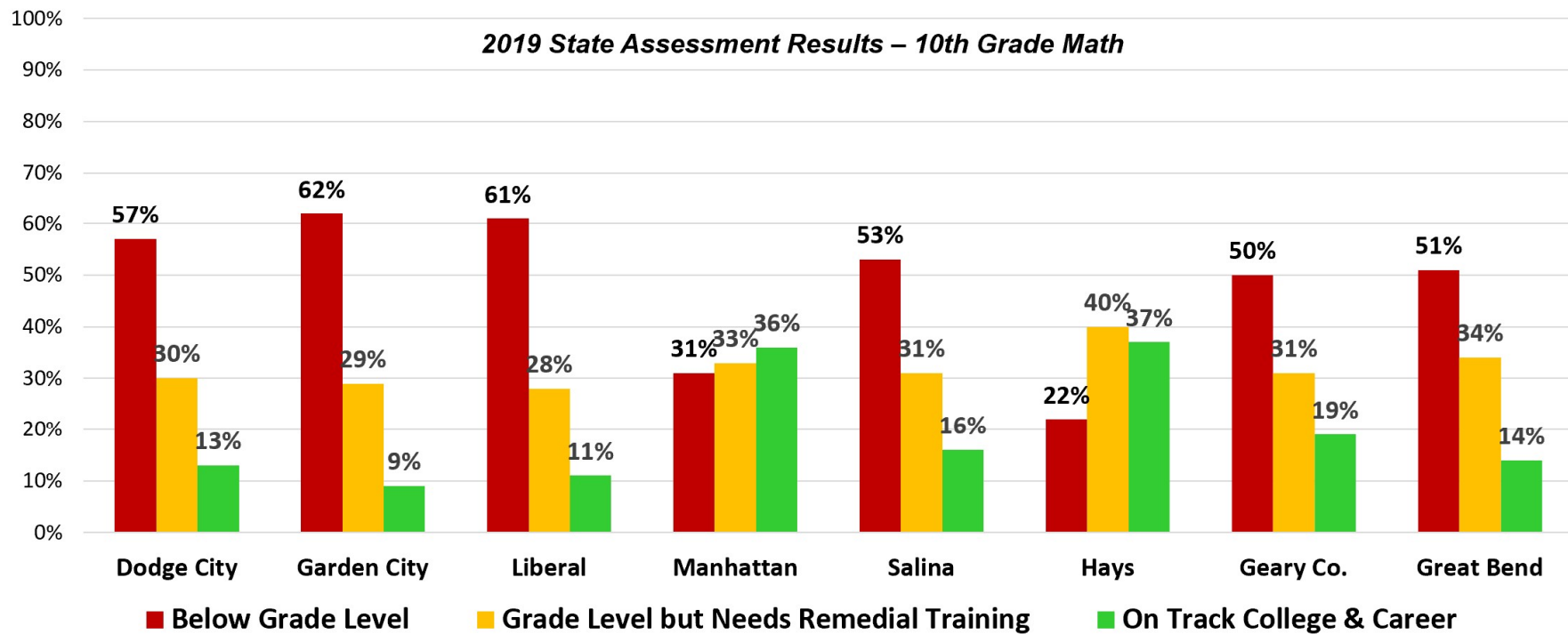
County property tax hikes, 1997 - 2018



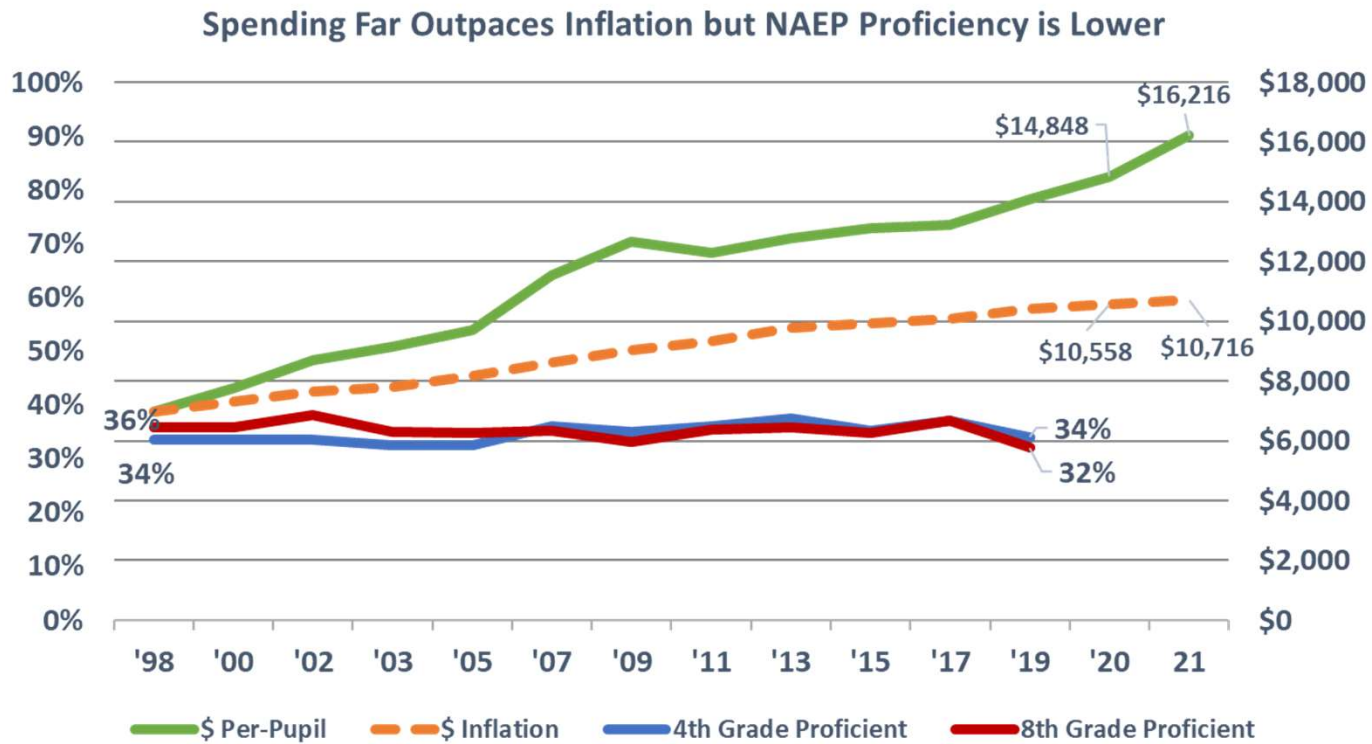
Local officials use your money to lobby against you and against property tax honesty

- SB 13 would make city and county officials vote on the entire property tax increase they impose.
- Cities and counties openly opposed last year; asking to have it delayed this year because they are too busy.
 - Sedgwick County supports SB 13 because a commissioner persuaded his colleagues to change their minds.
- Tell state reps you want SB 13 approved as passed by the Senate.

Many school districts have more kids below grade level than on track for college or career



Achievement declining statewide while funding explodes

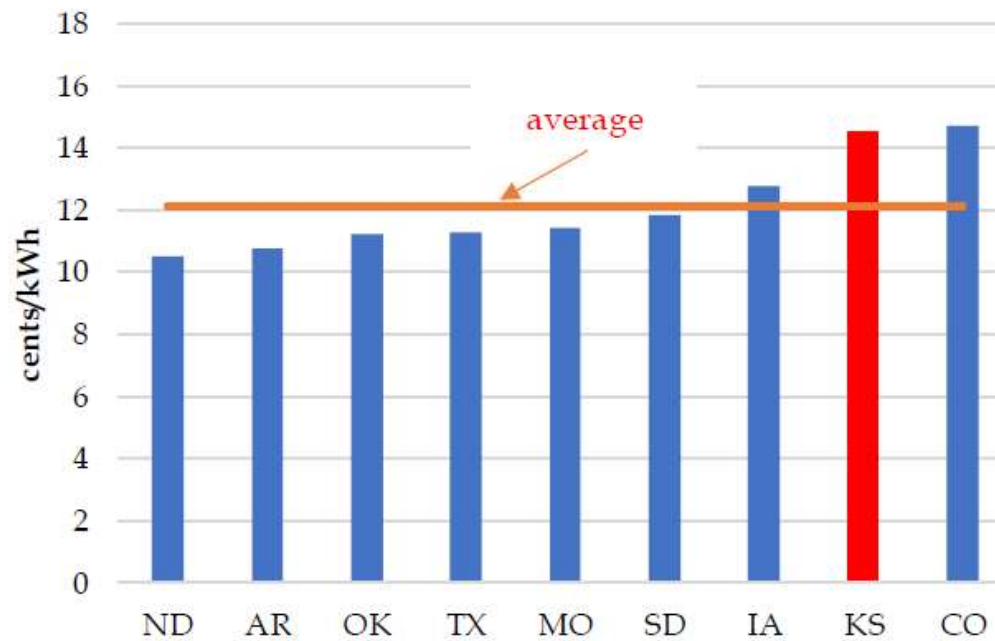


School board members use your money to lobby against accountability

- HB 2067 would require districts to allocate sufficient funding within available resources so that all students may (essentially) achieve grade level.
- *“... if this passes, we’d be held accountable!”*
- Uh, yeah, that’s the point.

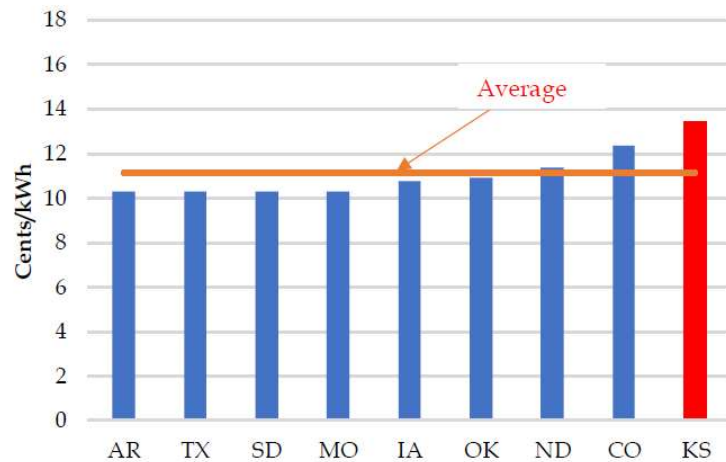
Kansas has 2nd-highest residential co-op rates

2018 Average residential electricity prices of co-ops in the region (cents/kWh)

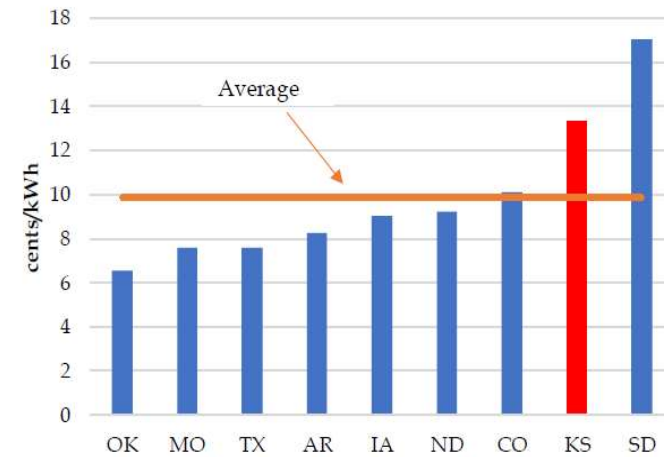


Kansas has worst commercial rates and 2nd-highest industrial co-op rates

2018 Average commercial electricity prices of co-ops in the region (cents/kWh)



2018 Average industrial electricity rates of co-ops in the region (cents/kWh)



High rates allow co-ops to pay high wages

2018 General Manager Pay at Kansas Electric Cooperatives		
Utility Name	Location	Total
CMS Electric	Meade	\$ 1,088,374
Pioneer Electric	Ulysses	\$ 653,127
Wheatland Electric	Scott City	\$ 605,849
FreeState Electric	Topeka	\$ 559,962
Prairie Land Electric	Norton	\$ 460,017
Midwest Energy, Inc.	Hays	\$ 450,100
Victory Electric	Dodge City	\$ 442,672
Lyon-Coffey Electric	Burlington	\$ 364,229
Butler Rural Electric	El Dorado	\$ 306,199
Sumner-Cowley Electric	Wellington	\$ 292,531
Lane Scott Electric	Dighton	\$ 284,813
Bluestem Electric	Wamego	\$ 270,263
D S & O Electric	Solomon	\$ 268,925
Flint Hills Rural Electric	Council Grove	\$ 261,795
Ninnescah Rural Electric	Pratt	\$ 261,596
Rolling Hills Electric	Beloit	\$ 250,672

Source: Co-op 990 tax returns

Lyon County adopted bad zoning laws

- County can dictate fence materials.
- Tests to prove land is used for agricultural purposes if less than 40 acres.
- Go through permit process to build outbuildings (scaled drawings, photos, property comparisons, etc.).
- Judge can grant warrants to inspect homes for zoning violations.

Running for office is just one way to get involved

- Precinct chairs.
- Volunteer to help with campaigns.
- Encourage civic and business groups to get presentations on major issues.
- Share information on social media.

Contact Info

BeeHonestKansas.com

KansasPolicy.org

SentinelKS.org

KansasOpenGov.org

KansasJustice.org

Dave.Trabert@KansasPolicy.org

W (913) 213-5038

M (316) 993-4667

